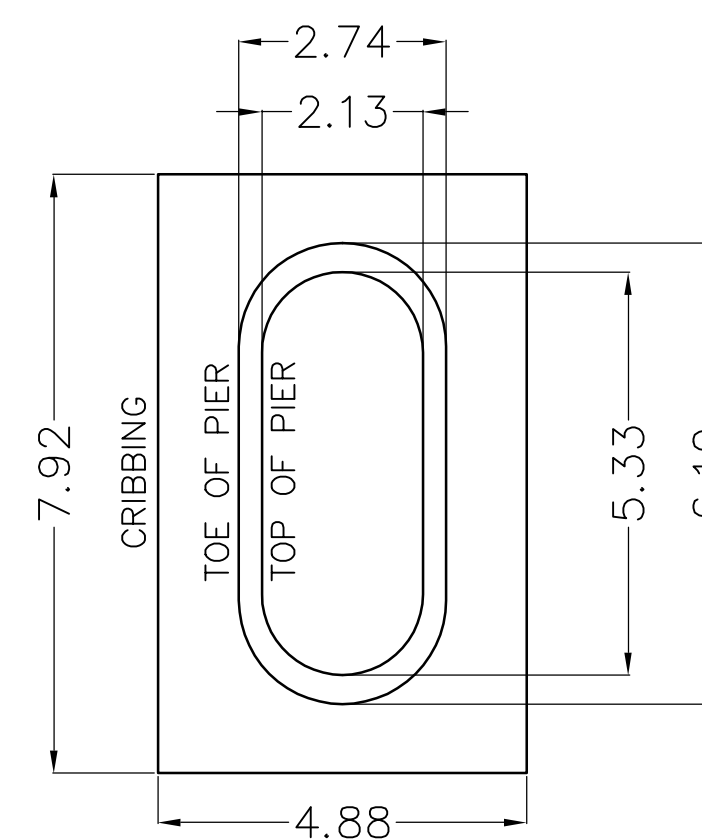
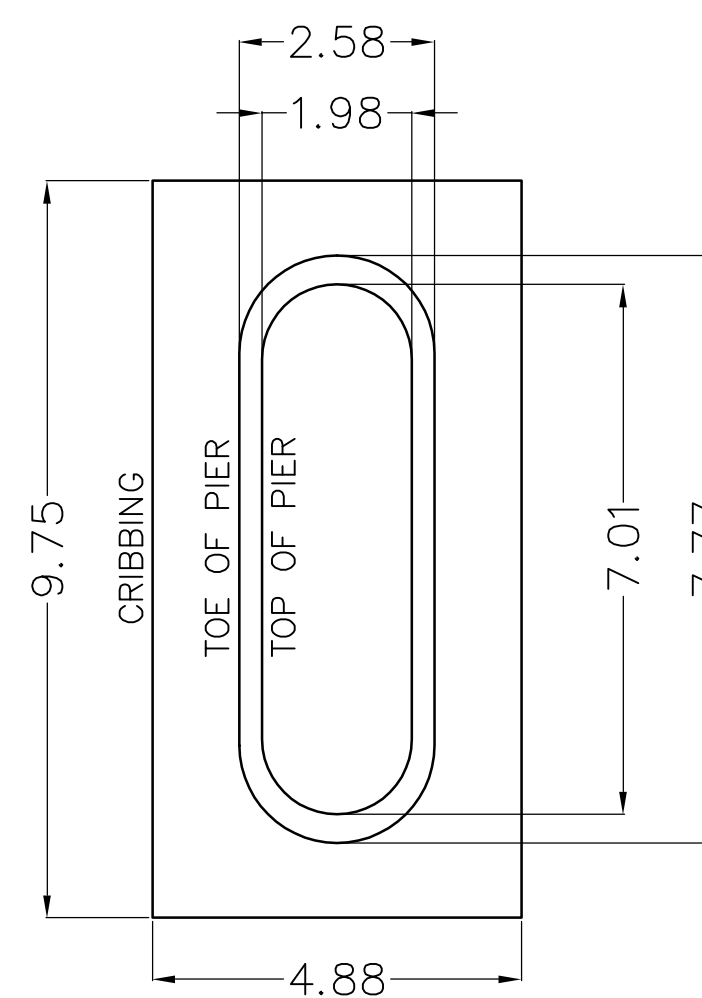


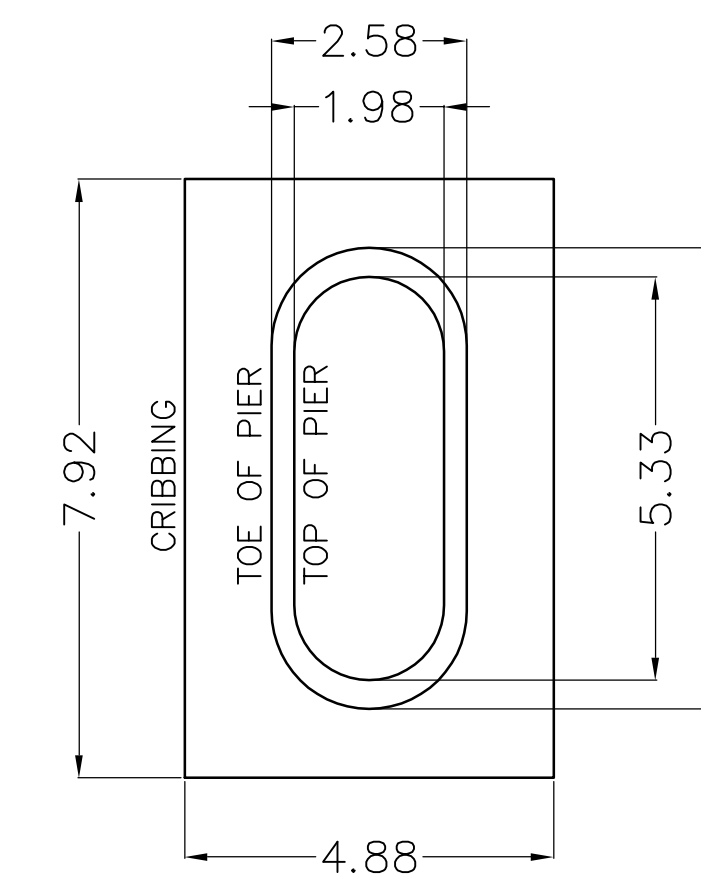
PIER 14



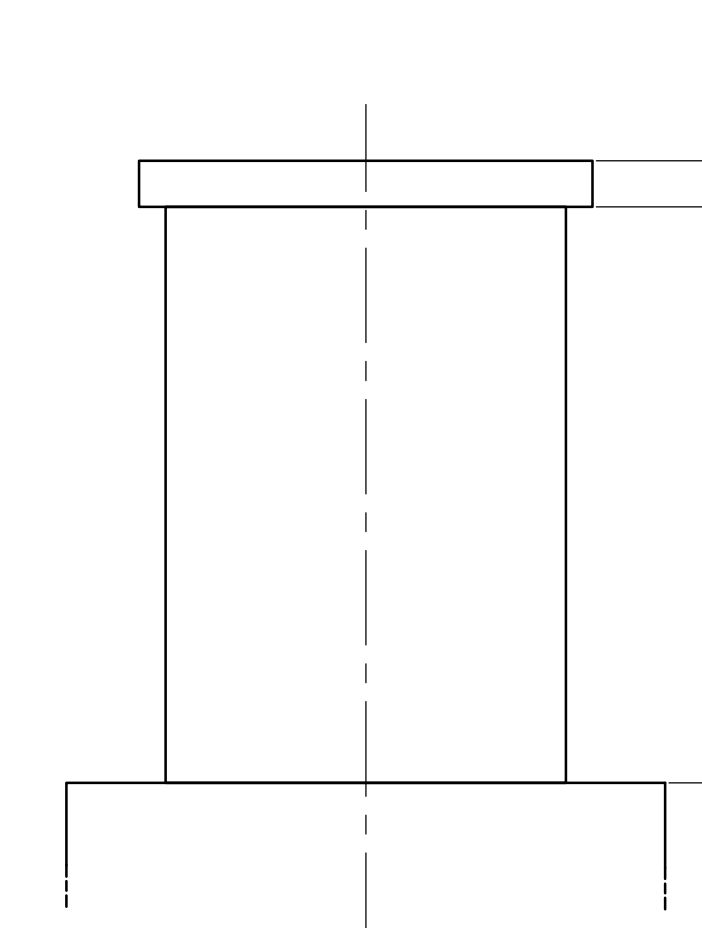
PIER 13



PIERS 8 and 9



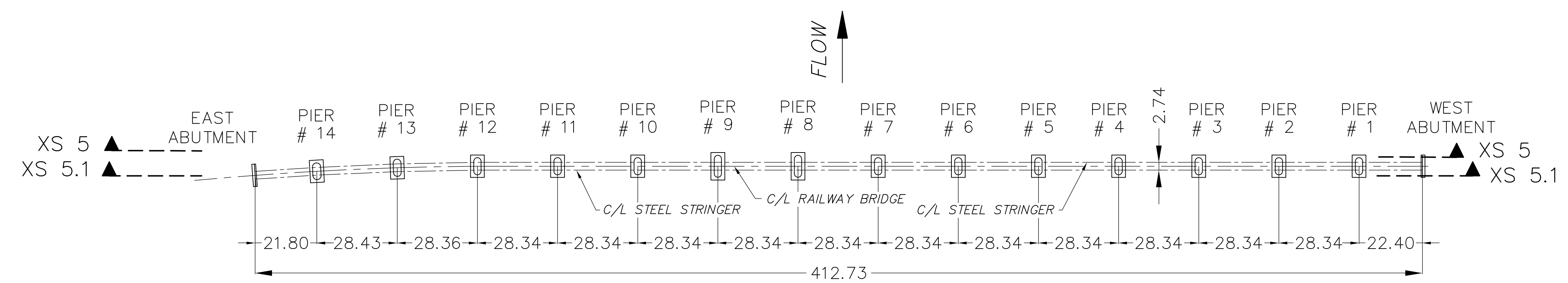
PIERS 1 to 7, 10 and 12



FRONT ELEVATION  
PIER (TYP.)

PIER DETAILS  
SCALE 1:200

**NOTE:**  
This information is considered historical as it represents channel conditions and configuration at the time of the survey only. User must accept responsibility of ensuring that the accuracy and completeness of provided data is suitable for the needs of the project or study. It is provided "as is" without warranty of any kind, whether express or implied. Under no circumstances will the Government of British Columbia be liable to any person or business entity for any direct, indirect, special, incidental, consequential, or other damages based on any use of this information.



PLAN

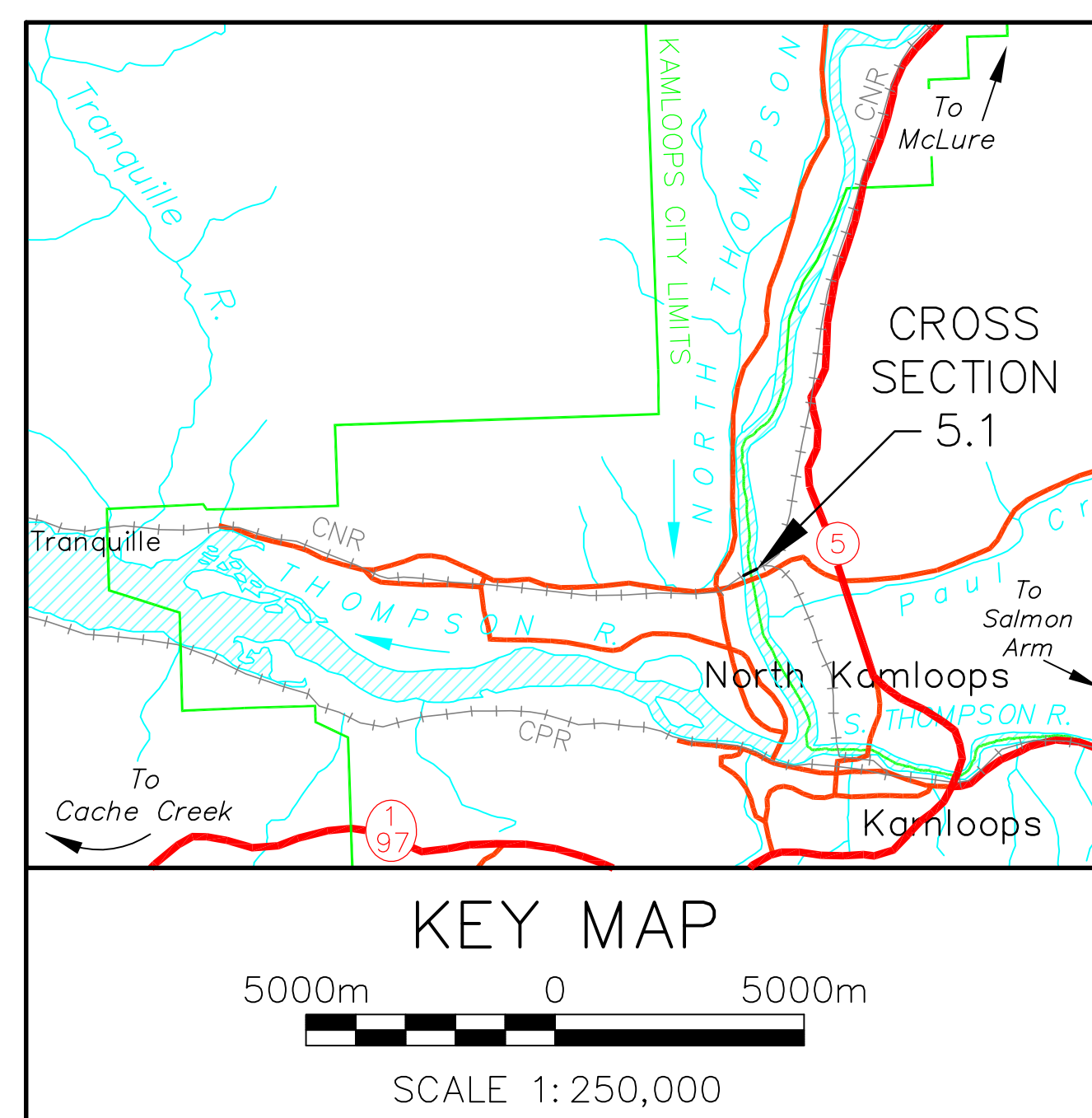
OCTOBER 2000 (PROJ.# 2000-2) TOTAL STATION



LEFT BANK VIEW

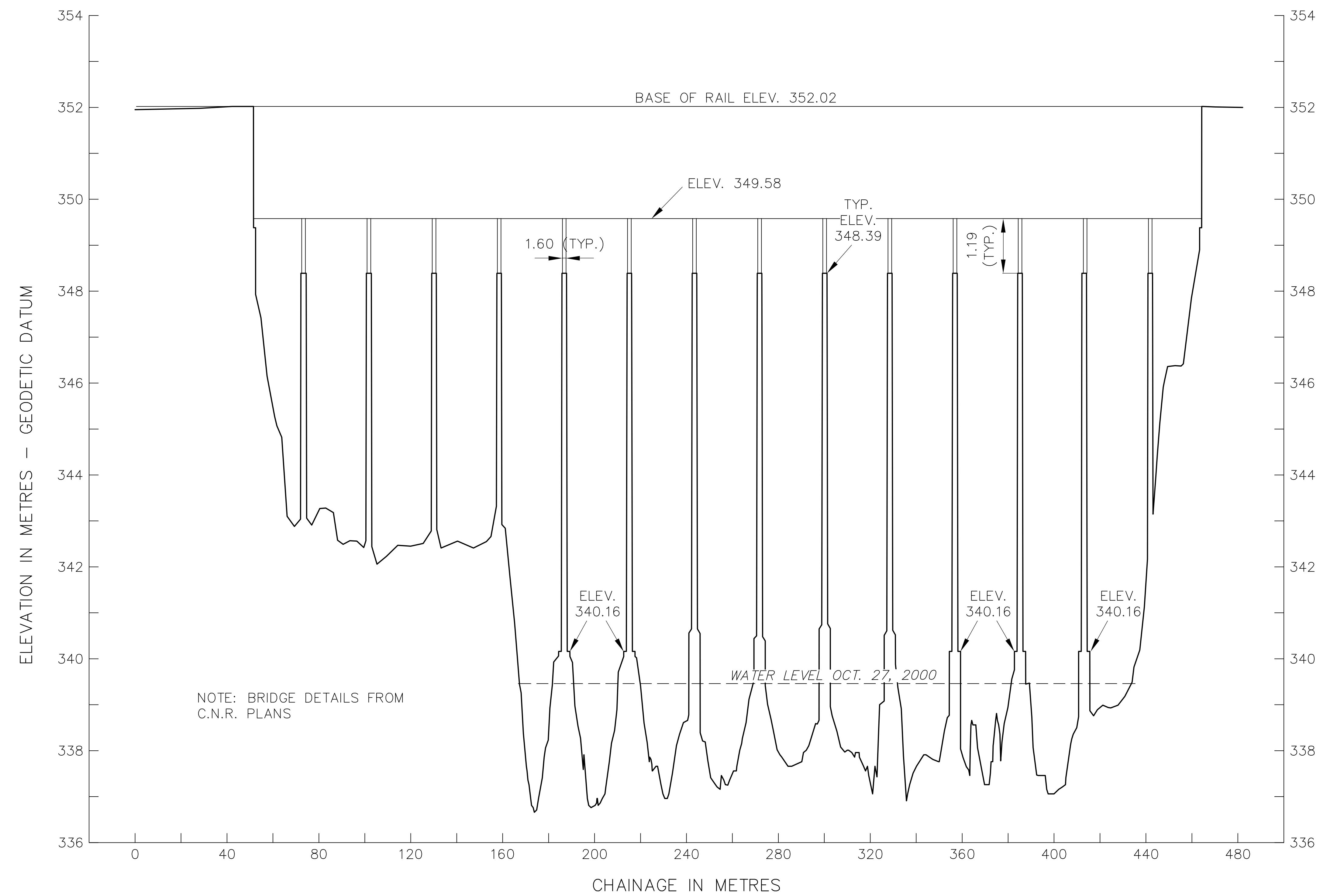


RIGHT BANK VIEW



KEY MAP

5000m 0 5000m  
SCALE 1:250,000



(NOTE: First point is a DUMMY station offset at 2000 metres from 0 chainage.)



DOWNSTREAM VIEW



UPSTREAM VIEW

NOTE: PHOTO IMAGES - 2000 SURVEY



Ministry of Environment, Lands and Parks  
Resources Inventory Branch  
Water Surveys Unit

# NORTH THOMPSON RIVER AT KAMLOOPS CROSS SECTION 5.1 AT UPSTREAM EDGE OF C. N. RAILWAY BRIDGE #10

SCALE HORIZ. 1:2000 VERT. 1:100

PROJECT NO:  
2000-2

DATE:  
OCTOBER 2000